



HAMBURG CITY COUNCIL AGENDA **FEBRUARY 28, 2017**

1. **Call City Council Meeting to Order at 6:00 PM**
 - **Pledge of Allegiance**

2. **Public Comment** *(Individuals may address the City Council about any non-agenda item(s) of concern. Speakers must state their name, address, and limit their remarks to three minutes. The City Council may not take official action on these items and may refer the matter to staff for a future report or direct that the matter be scheduled for a future meeting agenda.)*

3. **Agenda Review (Added Items) and Adoption**

4. **Consent Agenda** *(NOTICE TO PUBLIC: All those items listed as part of the Consent Agenda will be approved by a single motion, unless a request to discuss one of those items is made prior to that time. Anyone present at the meeting may request an item to be removed from the consent agenda. Please inform the Council when they approve the agenda for this meeting.)*
 - **Approve Minutes for February 14, 2017**
 - **Approve Added Claims List for February 2017**
 - **Approve Board of Appeal & Equalization Schedule for 2017**
 - **Water/Wastewater Report for January 2017**

5. **Old City Business**
 - **Industrial Park (Plat)**
 - **Timberline Wood Products**

6. **New City Business**
 - **Norwood–Young America Guide**
 - **City Ad (Community Hall)**
 - **Hamburg/Norwood/Green Isle 2017 State Amateur Baseball Tournament**
 - **Advertising Contract**

7. **Dean Johnson – Resource Strategies (City Planning Consultant)**
 - **2040 Comprehensive Plan Orientation**

8. **Disaster Relief Training Exercise**
 - **Hamburg City Council/HFD/Carver County**

9. **City Council Reports**
 - **Councilmember Jason Buckentin**
 - **Councilmember Tim Tracy**
 - **Councilmember Steve Trebesch (Buildings)**
 - **Councilmember Scott Feltmann**
 - **Mayor Chris Lund**

10. **Adjourn City Council Meeting**



***HAMBURG CITY COUNCIL AGENDA
FEBRUARY 28, 2017***

COMMUNITY HALL & PARK ACTIVITIES

FEBRUARY

4 – HHFC Fish Fry

MARCH

**8 – Bongards Creameries
11 – HFD Banquet
20 – Hamburg Baseball Club**

COMMUNITY CENTER (FIRE HALL) ACTIVITIES

FEBRUARY

**4 – Hamburg Baseball Club (YA TWP Room)
4 – HFD Training
6 – Hamburg Lions Club
6 – HFD Training
14 – Hamburg City Council Meeting – 7:00 PM
14 – Young America Township Meeting
20 – Hamburg Lions Club
21 – HFD Training
27 – Hamburg Fire Dept. (Relief Association) Meeting
28 – Hamburg City Council Meeting**

MARCH

**6 – Hamburg Lions Club
6 – HFD Training
7 – Firefighter 1001
13 – Young America Mutual Insurance (Afternoon)
14 – Hamburg City Council Meeting – 7:00 PM
14 – Young America Township Meeting
20 – Hamburg Lions Club
21 – Wm. Mueller & Sons Safety Training
22 – Wm. Mueller & Sons Safety Training
25 – Community Center Rental
27 – Hamburg Fire Dept. (Relief Association) Meeting**

FINAL

BOARD OF APPEAL & EQUALIZATION SCHEDULE
FOR 2017

April	17	Monday	6:00	p.m.	San Francisco Township
May	1	Monday	6:00	p.m.	Watertown Township
	8	Monday	6:00	p.m.	Dahlgren Township
	15	Monday	6:00	p.m.	Young America Township

Open Book Meeting at the Carver County Assessor's Office

April 24- April 28	8:00 a.m. – 4:30 p.m.
Chaska City	Watertown City
Norwood Young America	Chanhassen
Hamburg	New Germany
Carver	Mayer
Victoria	Waconia City
Cologne	Benton Township
Hancock Township	Laketown Township
Camden Township	Waconia Township
Hollywood Township	

Tuesday, June 27, 2017 at 1 PM County Board of Appeal & Equalization

**City of Hamburg
Water/Wastewater Report
January, 2017**

DRINKING WATER

I. Facilities Data:

Total Finished Water Metered From Filter:			
Avg. daily - 27,487 gal	Max. day - 54,055 gal	Month Total - 852,084 gal	
Water Pumped through Filters (from Well #2):			
Avg. daily - 16,797 gal	Max. day - 31,878 gal	Month - 520,718 gal	
Water Pumped through Filters (from Well #3):			
Avg. daily - 10,826 gal	Max. day - 29,251 gal	Month - 335,600 gal	
Fluoride Test Info:			
Avg. daily concentration - 8.25 mg/l	Required concentration - 0.5 -0.9 mg/l		
Total Chlorine Test Info:			
Avg. daily concentration - 2.01 mg/l	Recommended concentration - 1.0 -2.0 mg/l		
Treatment Chemicals Used for the Month:			
Chlorine - 21.75 gal	Fluoride - 18.0 gal (10:1 mix)	Permanganate - 18.75 gal	

II. Water Operations Information:

- The MN Dept. of Health (MDH) Monthly Fluoridation report was completed/submitted. Greg mostly does this submittal with my overview and signature.
- The State schedule for sample collection and submittal required samples to be collected/submitted to the state in January-2017 for fluoride duplicate and bacteriological.
- Weekly fluoride and chlorine residual analysis was complete during the month from samples collected from different areas of town. Greg does these onsite water analysis for fluoride and chlorine.
- The water plant detention tank was flushed several times during the month.
- The sodium permanganate feed system was put back online in early January after being shut down and the lines flushed with water. After about 2-3 days of flushing and purging of the feed lines, they were reconnected and put back online.



- Greg has had some issues with liquid chlorine and fluoride chemical solutions. After deliveries from the chemical supplier he had had to change feed rates and dilution ratios due to strong strength chemicals.
- We worked to get Greg set up with the MN DNR on their MPARS online reporting system. This online account approval is needed to complete and submit the annual DNR water use report which gives the DNR all of the water use information for the water that was pumped from the wells in 2016. After we get final approval we will work together (Greg and I) to get the 2016 report completed and filed. This should be complete in very early February.

WASTEWATER TREATMENT

I. Facilities Data:

Wastewater Pumped to Ponds:			
Avg. Daily Flow	-	37,559 gal	<i>Avg. Wet Weather Design</i> - 63,000 gal/day
Max. Day Flow	-	63,781 gal	Monthly Total - 1,164,329 gal
Pond Discharge Volume: NO POND DISCHARGE DURING DECEMBER.			
Avg. Daily Flow	-	0 Gal/day for <u>0 days</u>	Monthly Total - 0 gal
CBOD Concentration (Wastewater Strength)			
Quarterly Influent	-	N/A mg/l	<i>Design</i> - 204 mg/l
Effluent (Cal. Month Avg.)	-	N/A mg/l	<i>Permit Limit</i> - 25 mg/l
	-	N/A kg/day	<i>Permit Limit</i> - 53.6 kg/day
Effluent (Max. Cal. Week Avg.)	-	N/A mg/l	<i>Permit Limit</i> - 40 mg/l
	-	N/A kg/day	<i>Permit Limit</i> - 94.6 kg/day
Solids, Total Suspended (TSS) Concentration			
Quarterly Influent	-	N/A mg/l	
Effluent (Cal. Month Avg.)	-	N/A mg/l	<i>Permit Limit</i> - 45 mg/l
	-	N/A kg/day	<i>Permit Limit</i> - 96.5 kg/day
Effluent (Max. Cal. Week Avg.)	-	N/A mg/l	<i>Permit Limit</i> - 65 mg/l
	-	N/A kg/day	<i>Permit Limit</i> - 139 kg/day
Phosphorus Concentration			
Quarterly Influent	-	N/A mg/l	
Effluent (Cal. Month Avg.)	-	N/A mg/l	<i>Permit Limit - Monitor Only</i>
Fecal Coliform Geometric Mean (Applicable May - October)			
Effluent (Cal. Month Geo. Mean)	-	N/A CFU/100ml	<i>Permit Limit - 200 CFU/100ml</i>
pH			
Influent	Quarterly Result	- N/A	
Effluent	Cal. Month Min.	- N/A	Cal. Month Max. - 8.9 <i>Permit Limit 6.0 - 9.0</i>
Dissolved Oxygen (DO)			
Effluent (Cal. Month Minimum)	-	N/A mg/l	<i>Permit Limit - Monitor Only</i>

II. Wastewater Operations Information:

- The MPCA Monthly Discharge Monitoring Report was completed and submitted.
- I assisted Greg to complete all the Jan-17 wastewater forms, download the MPCA Ops form and complete it. We then upload the ops sheet and populate and download the preprint DMR. After reviewing the entries, the forms are all submitted online.
- No discharge was completed during January 2017. The next discharge window starts in late March/early April providing the ice is gone. No discharges can be done under the ice and all required analysis must be completed and meet the permit limits.
- Each week, time was spent at the ponds monitoring water levels and with moving water to balance the three ponds. This is done to control freezing in the pipes and in the control manholes and to continuously prepare for the spring discharging.
- No Sampling was required for the raw wastewater or for the ponds during January-17.
- North Star Pump company was out on Jan 12th to pull lift station #1 pump due to it kicking the breaker. After removing the lower impeller case, it was found that a large bolt (3/4" dia) had lodged in the impeller and locked the pump up. After removing the bolt, it was noticed that the impeller a "chunk" of its edge broke off. The pump was re-installed and checked for vibration and was put in stand-by for emergencies until a new impeller can be purchased and installed.

Please let me know of any questions that you may have.

Sincerely,

Curt Reetz



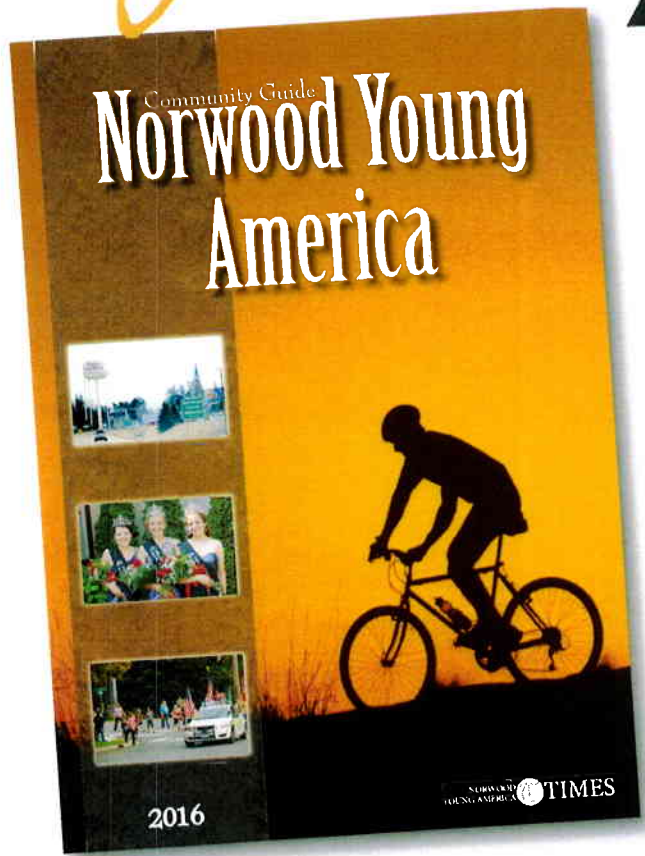
Consulting Water/Wastewater Operator
W.W.O.T.A. Inc

NORWOOD YOUNG AMERICA

guide

published
**APRIL 14
2017**

Will appear
on the website
for a year!



5,000 distributed to Norwood Young America, Cologne, Hamburg, Green Isle, New Germany, Plato, and surrounding areas with Life & Variety, Welcome Neighbor and local retailers.

SIZES & RATES

1/4 page (3.403"x 4.833")	\$260.00
1/2 Page Vert. (3.403"x 10")	\$395.00
1/2 Page Horiz. (7"x 4.833")	\$395.00
Full Page (7"x 10")	\$555.00
Inside Front/Back Cover (7"x 10")		\$680.00
Back (7"x 10")	\$730.00

Prices include 4-color



Deadline **MARCH 10, 2017**

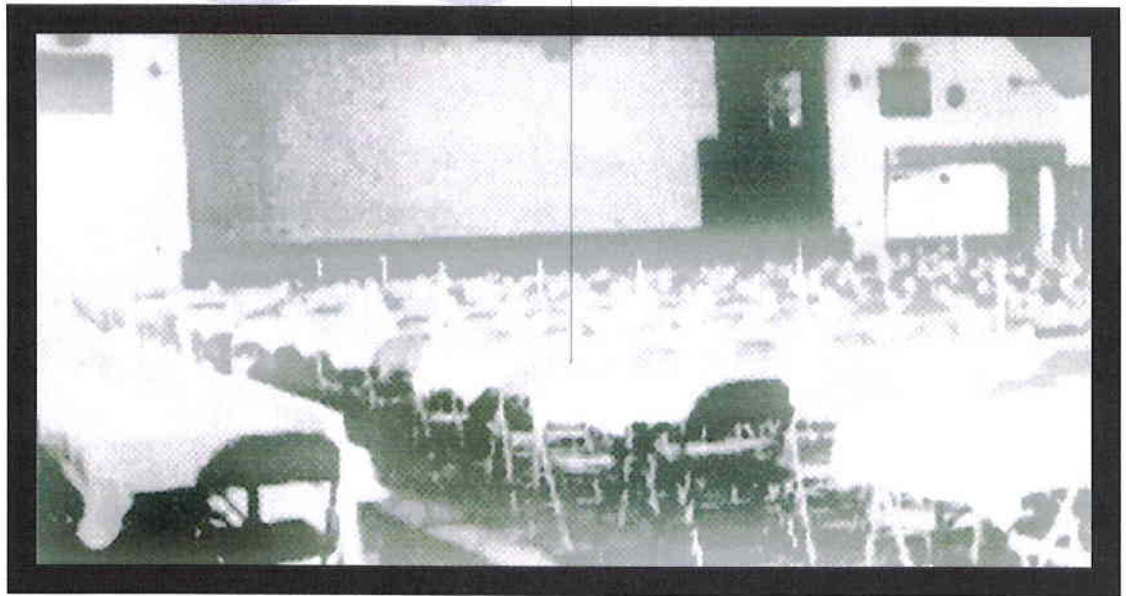
Call your sales representative today!

Rick Brauer

952-442-6806 | rick.brauer@ecm-inc.com

Pricing Includes
Search Engine
Optimization! Ask
your Ad Rep for
details.

Wedding & Banquet Dance FACILITY



Hamburg Hall

*part of your plans for
Wedding Dances & Receptions*

- *We have seating for 400+ for your catered dinner*
- *Large Dance Floor, Bar & Reasonable Rates*

Also, check with us for Anniversaries,
Graduations, and Other Occasions

952-467-3232

www.cityofhamburgmn.com



Hamburg/Norwood/Green Isle 2017 State Amateur Baseball Tournament

Advertising Contract

AD Description	Dimensions	Rate	Selection (X)
Two Page Spread	15" wide x 10" high	\$750	
Full Page	7.5" wide x 10" high	\$500	
Half Page	7.5" wide x 5" high	\$250	
Quarter Page	3.75 " wide x 5" high	\$150	
Eighth Page	3.75" wide x 2.5" high	\$100	
Program Back Cover/ Color (1)	8.5"wide x 11" high	\$1500	
Program Inside Cover/ Color (1) Inside back remains	8.5" wide x 11" high	\$1200	
Back Cover/ Color-Roster Insert (1)	8.5"wide x 11" high	\$1000	
Inside Cover/ Color-Roster Insert (1) Inside back remains	8.5" wide x 11" high	\$800	
Roster Strip (24)	7.5" wide x 2" high	\$250	

Advertising Deadline: _____

Please make checks payable to Hamburg/Norwood/ Green Isle BB 2017

Mail Checks:

Hamburg/Norwood/Green Isle BB 2017
Greg Kummer
420 Emma Street
Norwood, MN 55368

Advertiser Name: _____

Address: _____

Contact Person: _____ Phone: _____

Ad Size: _____ Cost: _____ Check #: _____

Signature: _____ Sales Rep: _____